

# Alliansloppet 15 km

August 26, 2021

## Competition information / PM

*Last updated 2021-08-25*

*The information in this PM will be supplemented / updated regularly, so be aware of changes and read this PM closely into the race.*

### **NOTE, NEW INFO BAG DELIVERY!**

Bag that you leave at the start is transported and stored at the finish area, Landbergsliden instead of Athlete zone as previously communicated. Each skier is responsible for taking their bag with them when leaving the finish area.

The number tag envelope contains a "starter bag" which is taken to the start to hand in covers, fluid belts and other smaller objects.

## **1 Registration / Qualification**

The competitions are limited to national team skiers, inviting top athletes and skiers with an active FIS code and distance FIS points better than: 140p Men - 190p Women

The 15 km distance competition will be arranged with a limit of 100 participants (maximum 65 men - 35 women, this is based on the distribution of participants from previous editions. The number of starting places for women may be added if there is great interest in the women's class).

Registration is via email to [info@alliansloppet.se](mailto:info@alliansloppet.se) with the following information:

Competition, Name, Ski club, FIS code, FIS points distance and / or sprint

Registration opens July 1, 2021 and closes August 1, 2021.

On 3rd Aug a ranking list and reserve list will be available on our website.

Preliminary start lists are published on the 16th of August, which is then continuously updated until the team leader's meeting on the 25th of Aug (distance race) - the 26th of Aug (Sprint).

## TROLLHÄTTAN ACTION WEEK

Participants who are selected but will not go are asked to inform the organizer that they will not participate as soon as possible (at the latest at the team leader meeting). Empty starting places are allocated to the skiers who are next in line on the reserve list.

The reserve list is created based on the best FIS points ranking.

## 2 The competition arena

The competition arena with start and finish is in the fall and hydropower plant area in Trollhättan.

### *Overview of the course*





*Overview of the way to Start and back to Athlete zone from Finish*

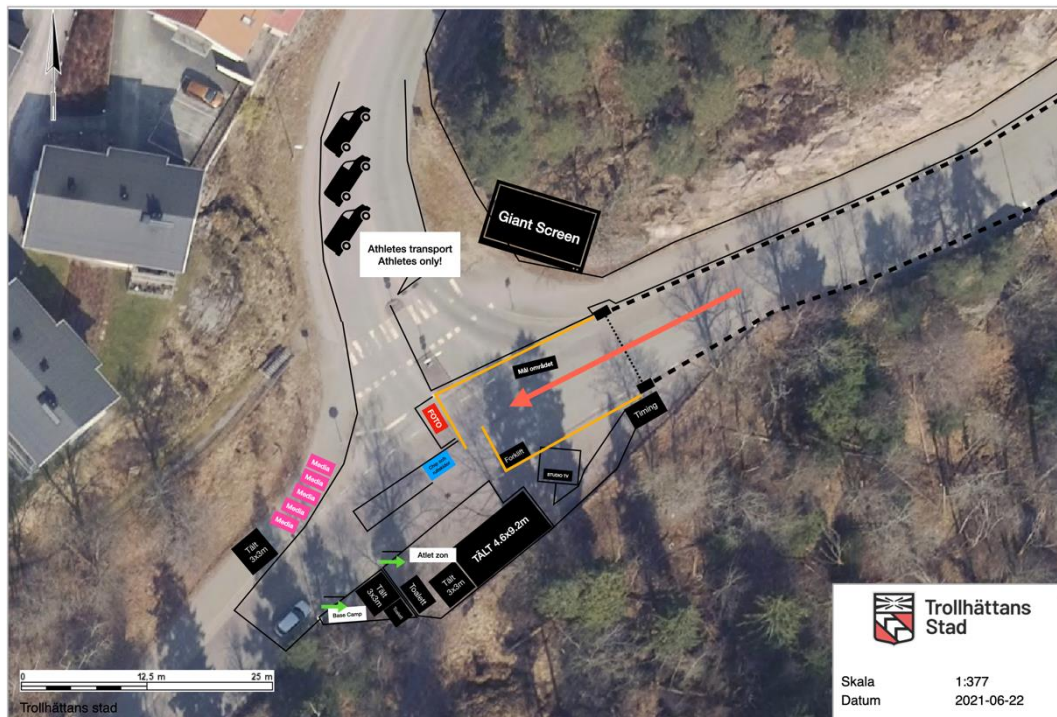




## Overview of the start zone



## Overview of the finish zone



### 3 COVID-19

With the greatest focus on everyone's safety and minimized risk of infection. We all have a shared responsibility to protect each other!

The number of officials has been minimized and a very limited number of visitors is allowed. Protective equipment will be used by functionaries adapted to the role.

Alcogel will be available at several locations.

### 4 Course

The course is a lap course according to the picture of the competition arena above.

The start takes place at the hydropower plant Olidan, Sweden's first large - scale experimental plant for electricity production via hydropower in Sweden, which has been producing electricity since 1910.

After starting and passing Olidan, the track connects the lap track, for 5 laps to end with the finish part that goes out over the Oscarsbron and up Landbergsliden to the finish.

We recommend to the athletes to count one lap as a passage of the church (5 passages of the church).

It is each skier's own responsibility to complete the right number of laps.

The course is clearly marked and there are course guards along the entire course.

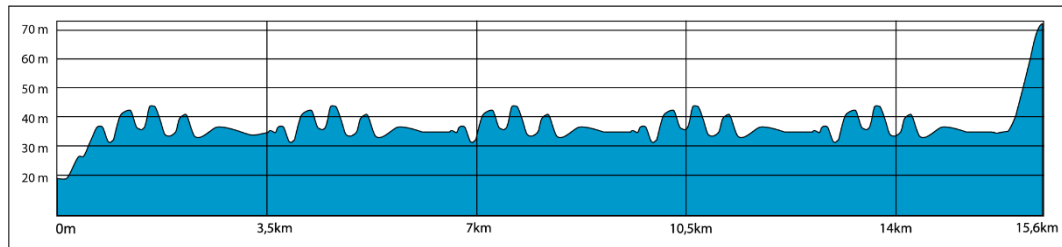
The track is closed for traffic, but on connecting roads such as warm-up south of the competition area may be busy and normal traffic rules apply. Be cautious!

All athletes are to ski from the finish area to a place close to the Athlete zone which is then reached after a short walk down a few stairs (see pictures above). The road is clearly marked with some officials along the road. The road is not closed for traffic, so be careful and obey normal traffic rules!

Some minibuses will also be available as an alternative to bring the athletes to the same place close to the stairs down to the Athlete zone.

*NOTE: For everyone's safety, it is not allowed to roller ski down to the start or down Landbergsliden from the goal towards the rest of the competition arena.*

## 5 Elevation profile



## 6 Start times / Classes

Men 15 km: First start 14.35, 30 sec start intervals

Women 15 km: First start 15:55, 30 sec start intervals

## 7 Team captain's meeting

By joint decision between SSF and Trollhättan Action Week, no physical team captain's meeting is held to minimize the risk of infection spreading.

The digital team captain's meeting will be held on **Wednesday August 25 at 19:00**: [Link to Teams Captain's Meeting 15 km](#)

The presentation will be published after the meeting.

## 8 Bib distribution

Bib and timekeeping chip will be picked up in the bib tent on the way into the Competition Arena.

Opening hours: 13:00-14:00

## 9 Loan skis

All athletes are provided with loan skis from SkiGo, wheel type 3.

The skis are picked up at the bib distribution and returned in the same place after the race.

The loan skis are tested on the track or the warm-up area and can be adjusted or changed between kl. 13:00-14:00.

From 14:00, loan skis can be adjusted at the start.

*NOTE: It is the responsibility of each athlete to pick up and take the loan skis to the start.*

## **10 Warm-up and official training on the track**

The course is open for official training and warm-up between 13:00-14:15, then warm-up takes place around the start and south of the competition area.

## **11 Toilets**

Toilets are available on the competition arena at the start and finish.

## **12 Shower / Change**

No shared showers are provided, but the athletes have access to tents at the start and finish.



## 13 Bag handling

### **NOTE, NEW INFO BAG DELIVERY!**

Bag that you leave at the start is transported and stored at the finish area, Landbergsliden instead of Athlete zone as previously communicated. Each skier is responsible for taking their bag with them when leaving the finish area.

The number tag envelope contains a "starter bag" which is taken to the start to hand in covers, fluid belts and other smaller objects.

~~Bag for change after the competition is stored at the Athlete zone at the start and handled by the respective skiers.~~

~~It is also possible to store a possible "second bag" in accessible tents at the finish area. The skiers are responsible to place and return such second bag.~~

## 14 Start procedure

The start is made with a start gate and 30 sec start intervals.

## 15 Pole support

Pole support is allowed along the entire course. Observe security, other competitors, officials and TV teams.

## 16 Abandon race

If you abandon the race, you must inform the officials at the arena at the finish area for safety reasons.

You must NOT cross the finish line with a chip if you abandon.

## 17 Result list

The results list is posted on the competition arena and published on the website.

## 18 Leave the arena after completing the race

Due to the COVID-19 pandemic, it is important that all athlete leave the competition arena as soon as possible after the race has been completed, except for the top 6 Women and Men athletes to attend the prize giving ceremony at the finish area directly after each respective race.

The results can be continuously viewed on a monitor at the finish.

## 19 Protest

Any protests must be submitted to the jury member immediately after the results list has been published.

## 20 Prize giving ceremony

Prize giving for places 1-6 takes place immediately after the last finish in each class, approximately 15:50 for men and approximately 17:00 for ladies, in the finish area and announced by the speaker.

Place	Amount
1	10 000 SEK
2	5 000 SEK
3	3 000 SEK
4	2 000 SEK
5	1 000 SEK
6	800 SEK

## 21 Healthcare

Medical personnel are available at the Alliance Race Arena at the entrance to Hojums Kraftverk with access to vehicles for a short response time across the entire course.

The medical staff can be reached via Tomas Everitt, +46 709 900 223.

In case of emergency, call 112! Norra Älvsborgs Länssjukhus (NÄL) is only 6 km from Alliansloppsarena.

Emergency services and officials are informed.

## 22 Insurance

All athletes are insured via Trollhättan Action Week.

## 23 Form of competition / rules and safety

The competition takes place according to the Swedish Ski Association's rules

The competition is conducted in classic technique; all other riding is prohibited and entails disqualification. Along the track there are officials who control the riding technique with video. The competition will be televised and a jury members will follow the TV images.

Follow directives from officials!

Helmet and goggles are mandatory, but in case of rain, goggles are optional

Everyone ensures to maintain a high level of sportsmanship before and during the competition, we work together to avoid accidents, the spread of infection by respecting Covid recommendation and spread a good culture in the sport.

## **24 Competition management**

Chief of competition: Mikael Jakobsson

Track manager: Ulf Nyström

Security Manager: Erik Hallberg

## **25 Jury**

Technical Delegate (TD): Robert Erixon

Assistant Technical Delegate (ATD): Björn Westerström

Chief of competition: Mikael Jakobsson